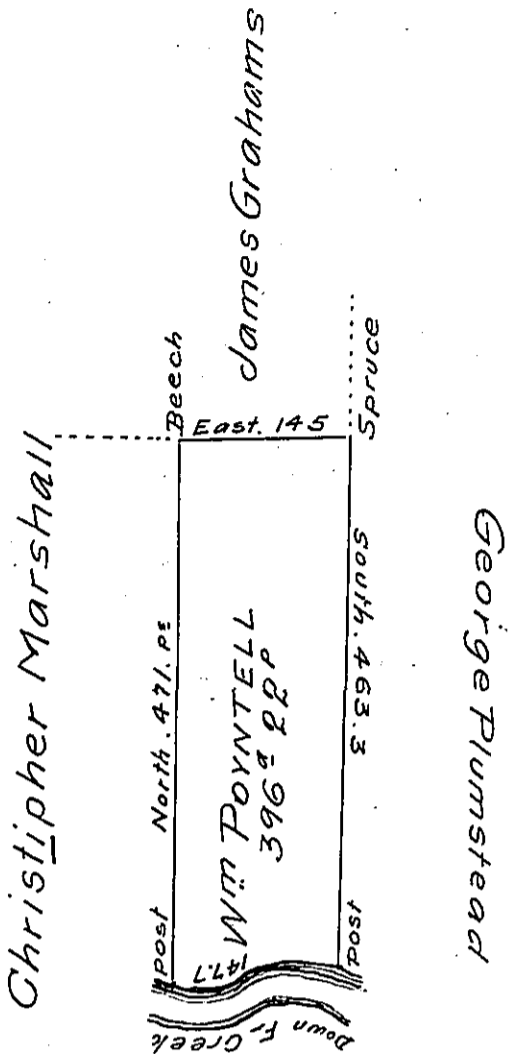


River Courses

AS
S 72 $\frac{1}{2}$ W 18
N 82 W 19.5
S 84 W 66
S 75 W 31
S 85 W 13.2
ps 147.7



Situate on and adjoining the West side of French Creek
 in ALLY County Containing 398 acres and 22 perches and
 allowance of six p Cent for roads &c

Surveyed 29th day of October 1795 in pursuance of a
 warrant dated the 13th April 1792

Wm Power D^Y S^r

To Dan^l Brodhead Esq^t
 Surveyor General

IN TESTIMONY that the above is a copy of the original remaining on file in
 the Department of Internal Affairs of Pennsylvania, made
 conformably to an Act of Assembly approved the 16th day of
 February, 1833, I have hereunto set my Hand and caused
 the Seal of said Department to be affixed at Harrisburg,
 this twenty-first day of July 1906

Isaac V. Pennington
 Secretary of Internal Affairs